



GO THRIVE MARKETING  
FLOW | BLOSSOM | PROSPER

ABOUT US & PORTFOLIO



COME **THRIVE** WITH US



GO THRIVE MARKETING  
FLOW | BLOSSOM | PROSPER

## WHO WE ARE?

Come thrive with our digital marketing campaigns! We create inspiring and powerful digital marketing strategies for your business. We infuse clarity and relevance into your messaging. Come partner with us to craft effective social media campaigns and integrative web strategies. Come Thrive...

[thrive@gothrivemarketing.com](mailto:thrive@gothrivemarketing.com)

760.427.1625



GO THRIVE MARKETING  
FLOW | BLOSSOM | PROSPER

## The Team behind the scenes

**NAME:** Dr. Natalie Guse

**TITLE:** COO

Dr. Natalie Guse is an industry expert in Marketing and Social Media Strategizing. She is very passionate about marketing and how it can change and impact the business revenue of companies. She was an early adopter of Social Media Marketing. She has developed Internet Marketing strategies for the Soccer FIFA World Cup in 2006 for the 12 host cities. She has applied a mixture of social media marketing, SEO, and traditional advertising strategies to help the 12 host cities in the light of the Soccer World Cup to attract more tourists, residents, and businesses to their destination.

In 2008, she decided to live her dream and to start a new career in the U.S. In 2008, she founded Majestic Social Media, a full-service social media, SEO, and Internet Marketing company, located in beautiful Oceanside, California. While building her own company, she has also completed her Ph.D in Business Administration. Her doctoral thesis focused on the correlation between social media strategies and the business revenue of U.S. based companies. Dr. Natalie Guse also has a Master's degree in Marketing and a Bachelor's degree in Journalism and PR. In 2017 she founded Thrive Marketing.





# WHAT SETS US APART?



We combine the art of marketing with the science of Internet Technology. We know that this is a unique approach and creates a competitive advantage.

## WHAT WE OFFER

- **Social Media** Marketing Consulting
- Social Media **Marketing Management**
- **Content Creation** and Copywriting  
(Social Media Content & Blogging)
- **Email Marketing** Campaigns
- **Webdesign** (Wordpress & Shopify)
- Integrative **Digital Marketing Plans**
- **Digital Marketing Management**
- Marketing & Sales **Consulting**
- **Digital Branding**
- **SEO & SEM**
- **Amazon & Ecommerce Marketing**



[thrive@gothrivemarketing.com](mailto:thrive@gothrivemarketing.com)

760.427.1625





Come THRIVE

We craft inspiring Marketing Campaigns!

## ARE YOU OUR CLIENT?

- **Small, medium AND large** businesses are our clients
- And....variety, the spice of life; we just LOVE it!
- Whether you are a small business owner or a marketing executive looking to hire a firm to take over your Digital Marketing Efforts, we are your partner to thrive!



[thrive@gothrivemarketing.com](mailto:thrive@gothrivemarketing.com)

760.427.1625

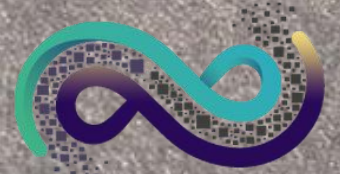


# Digital Marketing

In a digital age, identifying the heart of your messaging is everything! We strive to discover your perfect customer and craft messages that leave an impact!

Marketing  
Strategy

Come THRIVE



GO THRIVE MARKETING  
FLOW | BLOSSOM | PROSPER

# INDUSTRIES WE WORK FOR!

- Universities
- Fashion
- Ecommerce
- Medical
- B2B
- Retail
- Restaurants
- Beauty & Wellness
- Brick & Mortar
- Construction
- Software
- Service Industry

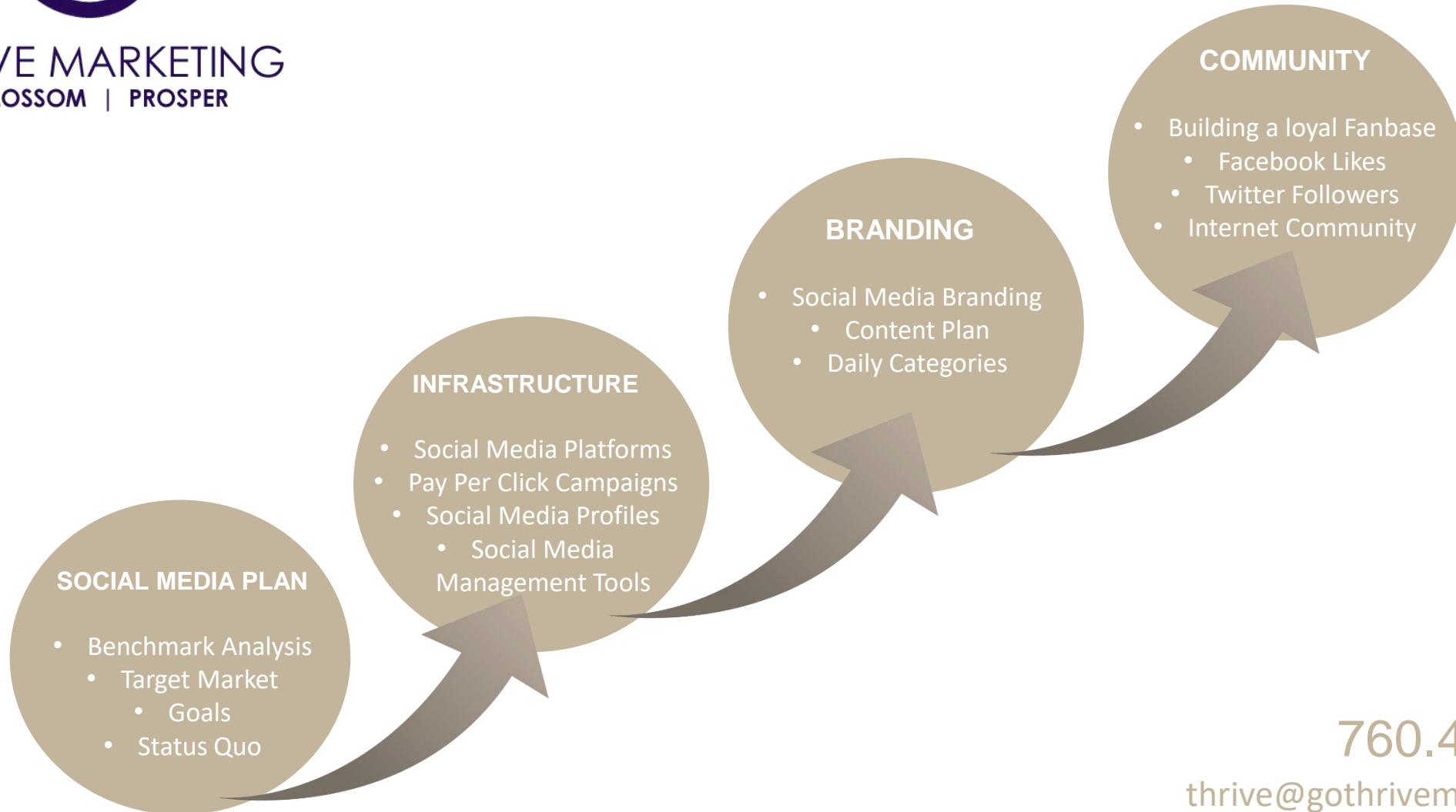
& more



# OUR SOCIAL MEDIA APPROACH



**GO THRIVE MARKETING**  
FLOW | BLOSSOM | PROSPER



760.427.1625

thrive@gothrivemarketing.com





## Why Social Media will help you grow

### **More Opportunities to Convert**

Every post you make about your company on a social media platform is an opportunity for customers to convert. When you build a following, you'll simultaneously have access to new customers, recent customers, and old customers, and you'll be able to interact with all of them.

### **Engagement:**

Communication is important for any business but positive engagement with YOUR customer base can really lead to improved reputation. Social allows you and your customers to interact freely and quickly.

The brand takes on a personal role and becomes a member of a conversation. Resulting exposure can develop a quality brand image.



## Why Social Media will help you grow

### **Increased Inbound Traffic**

Without social media, your inbound traffic is limited to people already familiar with your brand and individuals searching for keywords you currently rank for. Every social media profile you add is another path leading back to your site, and every piece of content you syndicate on those profiles is another opportunity for a new visitor. The more quality content you syndicate on social media, the more inbound traffic you'll generate, and more traffic means more leads and more conversions.

### **Using social media for business boosts your site's SEO**

Search engine crawlers know which pages are consistently earning traffic and which are just floating out there, forgotten and ignored. A killer content strategy for SEO is the most important part of earning top spots in search engine rankings, but driving traffic to your optimized pages will cause them to climb much faster in the search engine results pages (SERPs).



GO THRIVE MARKETING  
FLOW | BLOSSOM | PROSPER

OUR SERVICES







GO THRIVE MARKETING  
FLOW | BLOSSOM | PROSPER

## SOCIAL MEDIA & DIGITAL MARKETING

- Social Media Consulting
- Social Media Marketing Plans
- Social Media Management (Facebook, Instagram, LinkedIn)
- Content Creation and Marketing
- Contest Concept and Implementation
- Fan Increase and Engagement
- Blog Marketing and Content Creation
- Editorial Calendars
- Social Media Branding
- Pay Per Click Campaigns (Copy Content, Implementation)
- SEO

760.427.1625

thrive@gothrivemarketing.com



GO THRIVE MARKETING  
FLOW | BLOSSOM | PROSPER

## WEBDESIGN

- Custom Webdesign
- Wordpress and WoCommerce Webdesign
- Ecommerce Web Development
- Shopify Web Development
- Datafeed Management
- Onsite SEO Optimization
- Analytics Installation and Monitoring

760.427.1625

[thrive@gothrivemarketing.com](mailto:thrive@gothrivemarketing.com)



GO THRIVE MARKETING  
FLOW | BLOSSOM | PROSPER

## CONSULTING

- Marketing Consulting
- Sales Consulting
- Social Media Consulting
- Hands-On Training
- Digital Marketing Consulting
- Web Consulting

760.427.1625

[thrive@gothrivemarketing.com](mailto:thrive@gothrivemarketing.com)





BRANDING EXAMPLES



GO THRIVE MARKETING  
FLOW | BLOSSOM | PROSPER



*Agave Love*



**The iidea Company**  
Premium Agave Products





GO THRIVE MARKETING  
FLOW | BLOSSOM | PROSPER

BECAUSE YOUR  
**CAUSE**  
MATTERS!  
STRONGER TOGETHER



**TRY**



**BIG SMILE**  
**30% OFF**



**FRIEDMANS**  
APPLIANCE • KITCHEN • BATH



Beau  
KNOWS!



*Welcome Home!*

[FRIEDMANSAPPLIANCECENTER.COM](http://FRIEDMANSAPPLIANCECENTER.COM)

WHERE THE MOST IMPORTANT  
HOME IS YOURS!



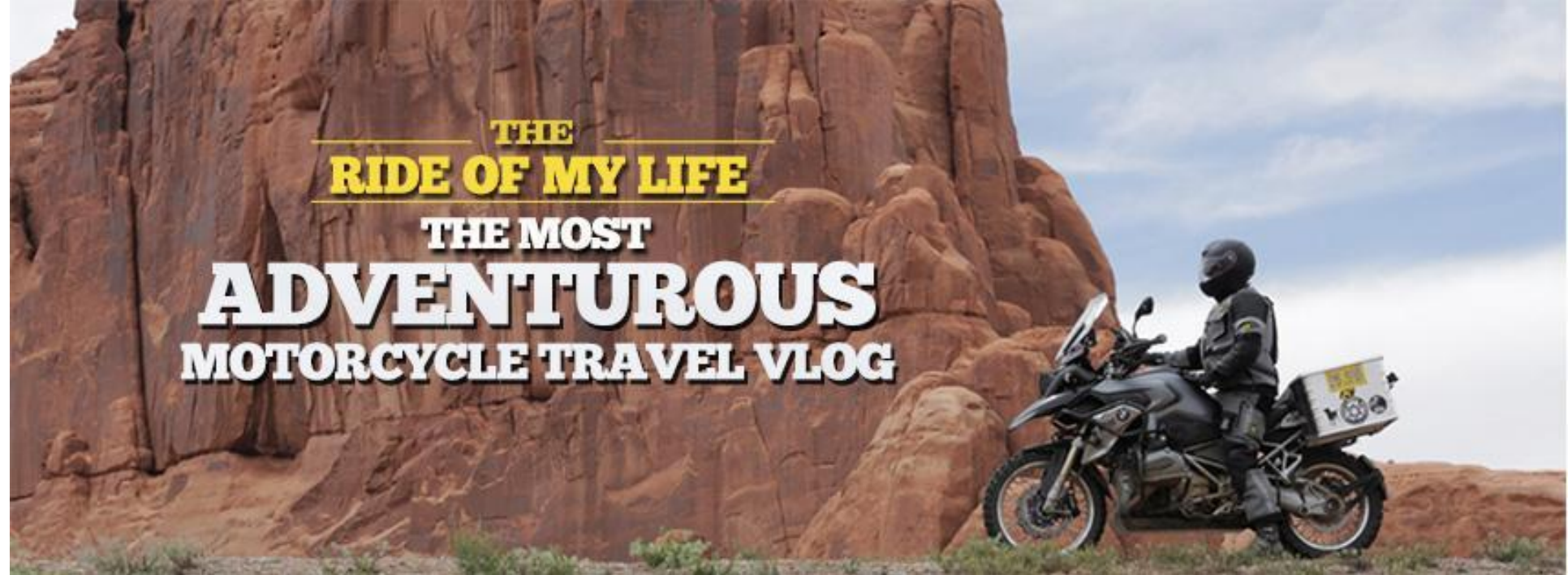
562-989-7756



real patients -  
real experiences





An advertisement for PropDropBiz. The background is a photograph of a modern, multi-story house with large windows and a balcony, situated on a rocky coastline with the ocean in the background. The PropDropBiz logo and tagline "Locating distressed properties worldwide" are in the top left. A Twitter icon and "PropDropBiz" are below. A "CONTACT US 855-715-5223" button is in the bottom center. On the right, there are several Polaroid-style photo frames showing various scenic and urban locations. A gold seal in the bottom right corner says "100% SATISFACTION GUARANTEED".

**proptdrop.biz**  
Locating distressed properties worldwide

PropDropBiz

CONTACT US  
855-715-5223

www.proptdrop.biz info@proptdrop.biz

100% SATISFACTION GUARANTEED





GO THRIVE MARKETING  
FLOW | BLOSSOM | PROSPER

10%  
FACEBOOK  
discount

*all things*  
**INFLATABLE**

IF YOU CAN BLOW IT UP, WE'LL HAVE IT

f t i

WWW.ALLTHINGSINFLATABLE.COM

SUPERWOMAN  
CELEBRATING 25 YEARS

CARPE DIEM  
NOW AVAILABLE  
IN STORES & ONLINE

Available on  
iTunes amazon.com

Karyn White





GO THRIVE MARKETING  
FLOW | BLOSSOM | PROSPER



web: <http://trpz.com>  
email: [info@trpz.com](mailto:info@trpz.com)  
twitter: @trpzus







THE RANCH - 450 QUAIL GARDENS DR. 92024

# — 9TH ANNUAL — ECO FEST

LIVE HEALTHY • SAVE MONEY • HELP THE PLANET



SPONSORS



"Funded in part by the City of Encinitas and Mizel Family Foundation Community Grant Program."

TAKING SUPPLEMENTS HAS NEVER BEEN EASIER!

# SPORT SHOT PRO

CHECK  
OUR OFFER  
795 358 497

FREE  
14 DAYS TRIAL



THE BEST SUPPLEMENT DISPENSER  
ANY TIME ANY PLACE





POSTING EXAMPLES



AGAVEN  
PREMIUM AGAVE PRODUCTS

snack on  
less sugar

{ you're sweet  
enough already! }

AGAVE  
IS LIFE



AGAVEN  
PREMIUM AGAVE PRODUCTS



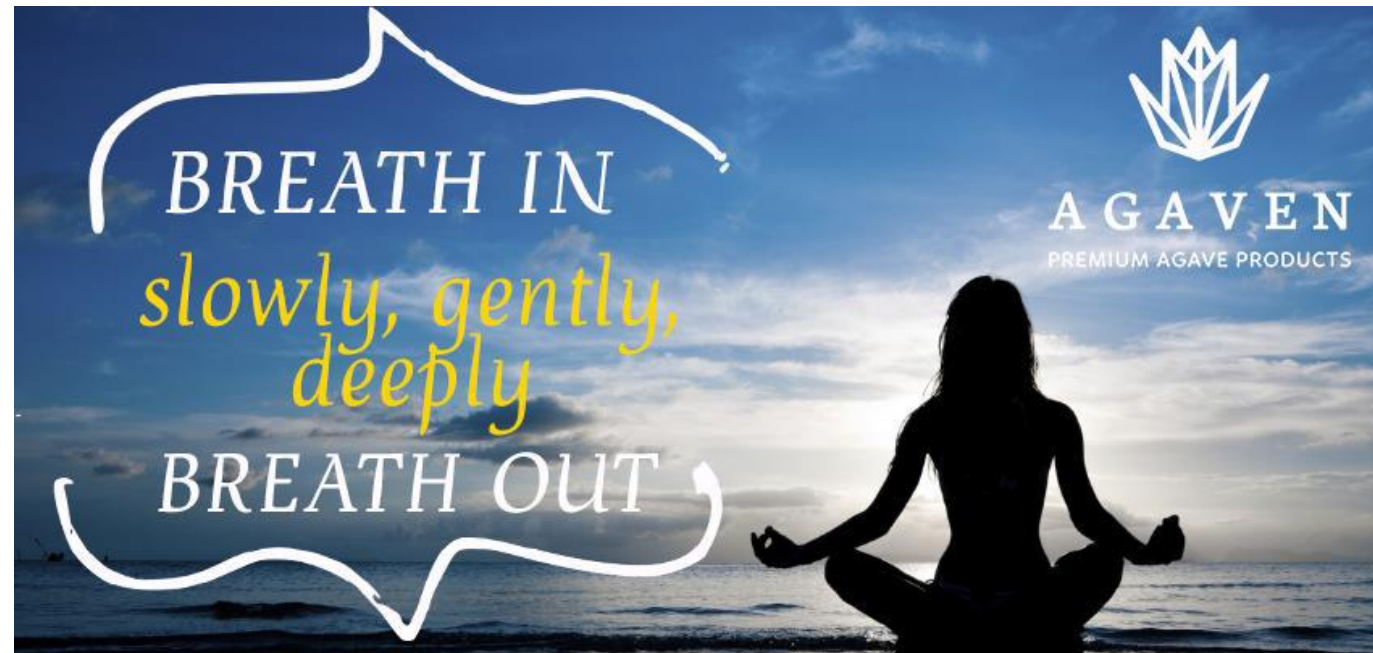
GO THRIVE MARKETING  
FLOW | BLOSSOM | PROSPER

ONE MUST LEARN:

to take life with a grain of  
salt, slice of lime  
and a shot of tequila.



  
The **iidea** Company  
Premium Agave Products



BREATH IN  
*slowly, gently,  
deeply*  
BREATH OUT

  
AGAVEN  
PREMIUM AGAVE PRODUCTS





GO THRIVE MARKETING  
FLOW | BLOSSOM | PROSPER







Dec me

Beautiful from inside and out





**COMPLIANCE**



**SUPPLY CHAIN  
NEXUS**



**BETTER  
WORLD**





SOURCE  
INTELLIGENCE

SUPPLY CHAIN  
NEXUS



SOURCE  
INTELLIGENCE

SUPPLY CHAIN  
NEXUS

*dream*  
**BIG**

*Slender Me Medical*  
Weight Loss and Aesthetics Center, Inc.  
A Professional Medical Corporation



**Celebrity Secrets**

*Slender Me Medical*  
Weight Loss and Aesthetics Center, Inc.  
A Professional Medical Corporation



#LIFEISAJOURNEY

PRETEND THAT HITTING  
THE LIKE BUTTON  
WILL TAKE YOU HERE





**#MOTIVATIONTOMOVE**





CORPORATE  
**PRANA**



BREATHING IN  
RELAXATION

BREATHING OUT  
TENSION



# CALIFORNIA DREAMING



Holiday Inn

GET YOUR RESERVATION TODAY



EMAIL & BRANDING

WHIRLPOOL • VIKING • THERMADOR • VENT-A-HOOD • SUB ZERO • ROHL • MONOGRAM • MAINTAG • INNERSAIRE • GE • FRIGIDAIRE • ICON • GAGGENAU • FRANKE • ELECTROLUX • DORNBACH • BERTAZZONI • GROHE • BREW EXPRESS • LITNE • AGA • FISHER & PAYKEL • DACOR • BOSCH • ASKO • GE CAFE • DCS • BODY GLOVE • BAIN ULTRA

**FRIEDMANS**  
APPLIANCE • KITCHEN • BATH

AND BEDS!

GE CONSUMER REBATE | JANUARY 7 - JANUARY 20

UP TO **\$500**  
REBATE



**GOOD-BYE 2014**  
INVENTORY CLEARANCE SALE  
ALL MONTH LONG!

**WE MUST MAKE ROOM  
FOR NEW PRODUCT!**

**SAVE 30-60% OFF LIST PRICE!**

FIND US ON:  
f t+ youtu

**FRIEDMANS**  
"Where the Most Important Home is Yours"  
1827 E. Spring St., West of Cherry, Long Beach  
(562) 989-7756  
Open Mon-Sat 10-6 Sun CLOSED  
www.friedmansappliancecenter.com

Beau knows!

WHIRLPOOL • VIKING • THERMADOR • VENT-A-HOOD • SUB ZERO • ROHL • MONOGRAM • MAINTAG • INNERSAIRE • GE • FRIGIDAIRE • ICON • GAGGENAU • FRANKE • ELECTROLUX • DORNBACH • BERTAZZONI • GROHE • BREW EXPRESS • LITNE • AGA • FISHER & PAYKEL • DACOR • BOSCH • ASKO • GE CAFE • DCS • BODY GLOVE • BAIN ULTRA

**FRIEDMANS**  
APPLIANCE • KITCHEN • BATH

AND BEDS!

**CULINARY AMBITION**  
THE FIRST INGREDIENT IS KITCHENAID BRAND

RECEIVE UP TO A  
**\$1500**  
PREPAID CARD WITH PURCHASE OF  
SELECT KITCHENAID BRAND APPLIANCES\*  
MARCH 1-JUNE 30, 2015



**KitchenAid**

It's time again to choose  
the BEST of the BEST!  
VOTE FOR US NOW AT  
presstelegram.com/readerschoice

**2015**  
WESTERN CHOICE AWARD

FIND US ON:  
f t+ youtu

**FRIEDMANS**  
"Where the Most Important Home is Yours"  
1827 E. Spring St., West of Cherry, Long Beach  
(562) 989-7756  
Open Mon-Sat 10-6 Sun CLOSED  
www.friedmansappliancecenter.com

Beau knows!

WHIRLPOOL • VIKING • THERMADOR • VENT-A-HOOD • SUB ZERO • ROHL • MONOGRAM • MAINTAG • INNERSAIRE • GE • FRIGIDAIRE • ICON • GAGGENAU • FRANKE • ELECTROLUX • DORNBACH • BERTAZZONI • GROHE • BREW EXPRESS • LITNE • AGA • FISHER & PAYKEL • DACOR • BOSCH • ASKO • GE CAFE • DCS • BODY GLOVE • BAIN ULTRA

**FRIEDMANS**  
APPLIANCE • KITCHEN • BATH

AND BEDS!



**Slate. The finish  
FOR EVERY  
KITCHEN**

Slate's matte finish hides fingerprints, holds magnets and goes with just about anything...including your budget.

For a limited time, Get up to  
**\$500 BACK**  
on qualifying Slate appliances.

BUY 3 GET \$500\* | BUY 4 GET \$500\* | BUY 2 GET \$200\* | BUY 2 GET \$100\*

GE  
GE APPLIANCES

\*In mail-in or online rebate. See rebate form for details. Offer ends August 31, 2015.

FIND US ON:  
f t+ youtu

**FRIEDMANS**  
"Where the Most Important Home is Yours"  
1827 E. Spring St., West of Cherry, Long Beach  
(562) 989-7756  
Open Mon-Sat 10-6 Sun CLOSED  
www.friedmansappliancecenter.com

Beau knows!





### Welcome to PropDropIntl.com



Need to sell your home fast with no brokerage fees? sign up with prodropintl.com today and share photos, videos and information about your property with over 1,000,000 buyers and investors worldwide and speed up the sale of your property dramatically. Let PropDrop help you sell your distressed property fast and easy (with no brokerage fees) to investors and buyers worldwide.

normally you would pay \$395 per year for this unique service but for a short time the first 100 to enter promo code pro100 can take advantage of this special one time offer for only \$199 per yr. advertise internationally and get your property sold fast. click here to visit our website for details at prodropintl.com or call 855 715 5223 and get started today.

Enter Code #pro100

Enter this code to get your PropDrop discount. Offer includes 1 year membership at a discount. Premium Listings are not included. List with power.

Get Started Now!

### Listings



78214 Berrbrook Ct, Pahr Desert, Ca 92211 USD 475,000 78214 Berrbrook Ct, Pahr Desert, Ca 92211, and Homes for Sale.	11010 Berrbrook Dr, Escondido, Ca 92026 USD 360,000 11010 Berrbrook Dr, Escondido, Ca 92026, and Homes for Sale.	68724 E St, Carmel City, Ca 92234 USD 215,000 68724 E St, Carmel City, Ca 92234, and Homes for Sale.
--	---	---

Get Started Now!

## NET-A-PORTER

The world's premier online luxury fashion destination

WHAT'S NEW DESIGNERS CLOTHING BAGS SHOES SALE



# The MODERN lady

Channel the womanly mood of the moment in cinched waists, demure hemlines and feminine prints

SHOP NOW ▶



# PREFERRED CLIENT UPDATE

Working Hard to Keep You Informed



**Tom Kehan**  
Sales Representative

*Your Personal Realtor...  
for Life!*

Direct: 416.252.6421  
Office: 416.252.6422

realestate@morrisontheweb.com  
www.morrisontheweb.com

## Dear Steve & Cathy

It's almost impossible to get through the day without being exposed to at least some real estate news. You open the paper and there's an item on the housing market. You turn on the TV and you're greeted with a news report about housing prices going up or down.

It can all be very confusing, especially if you've been thinking about making a move – either now or sometime down the road.

What you may need is a reality check. A simple, easy-to-understand explanation of what's going on in the local real estate scene and the opportunities available to you.

You see, the national real estate market – news of which is often featured in newspapers and on TV – doesn't necessarily reflect what's going on locally.

Yet it's the local market conditions that affect you most.

So give me a call if you have any questions, or if you want an update on the local real estate scene. I'll explain what's going on in clear, simple terms.

All the best,

*Tom*

*think,  
act... live!*

137 Bentworth Avenue  
Toronto, ON M6A 1P6



**Tom Kehan's**  
PREFERRED CLIENT UPDATE

54891-0001  
STEVE & CATHY SMITH  
137 BENTWORTH AVENUE  
TORONTO ONTARIO M6A 1P6

Preferred Client Update • Working Hard to Keep You Informed

## Did you know...

Natural light isn't just more pleasant than artificial light, it is also better for your health. Sunlight stimulates the production of Vitamin D in your body which is used to help maintain bone density. In addition, sunlight can improve mood. So, whenever possible, open the curtains in your home and let the light cheer you!

# The Holiday Shop

Get holiday ready with our range of summer holiday essentials. Whether you're a beach retreat type of person, a city breaker or someone who enjoys staying active whilst away, we have the perfect selection of holiday must-haves. Read on to find out more...

## Beach

Enjoy the sun, sea and sand with our selection of beach retreat essentials.

SHOP BEACH



SUNGLASSES, ZARA, DRESS, PRADA



SHO ETRO, FURZE, ETCO

## City

Explore the wonders of a foreign city with these tourist trip must-haves...

SHOP CITY



## Active

Whether hiking, skiing or surfing, make the most of your adventure holiday with these practical pieces!

SHOP ACTIVE





GO THRIVE MARKETING  
FLOW | BLOSSOM | PROSPER



# WEBDESIGN





GO THRIVE MARKETING  
FLOW | BLOSSOM | PROSPER

## WORDPRESS

- <https://www.clouderpsoftware.com/>
- <https://saminasleep.com/>
- <https://www.sourceintelligence.com/>
- <https://rfk.org/>
- <http://drjuls.com/>



GO THRIVE MARKETING  
FLOW | BLOSSOM | PROSPER

## SHOPIFY

<https://citycolorcosmetics.com/>

<https://jackweirandsons.com/>

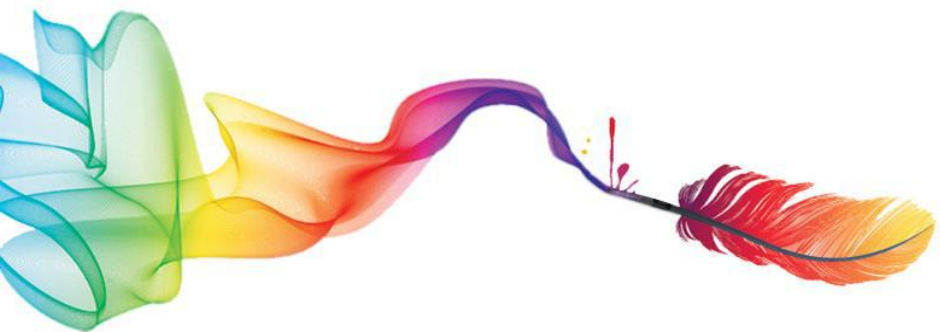
<https://www.julezbryant.com/>

<https://www.bodyography.com/>

<https://www.yolofarmstand.com/>



GO THRIVE MARKETING  
FLOW | BLOSSOM | PROSPER



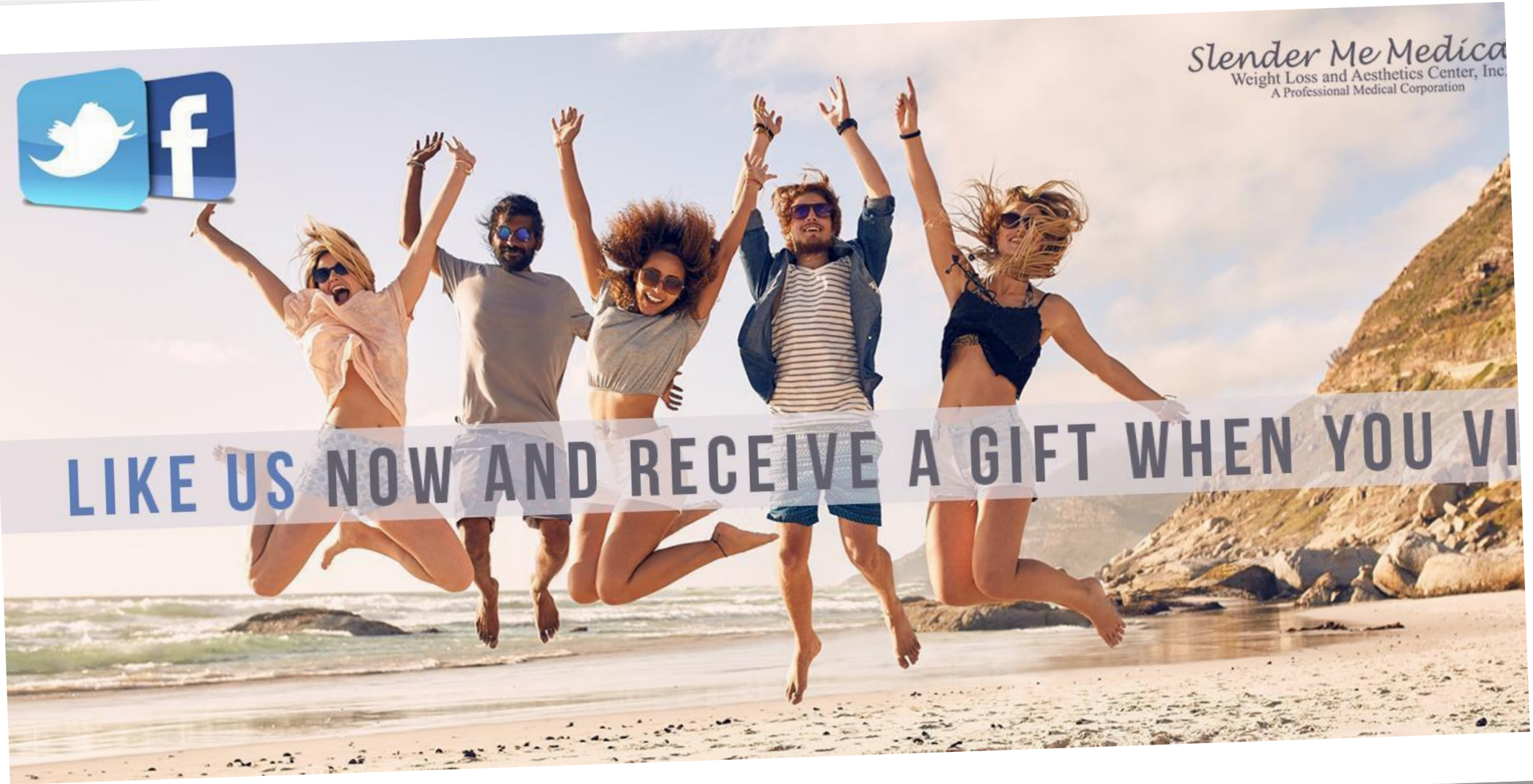
PRINT & REFERRAL





*Slender Me Medical*  
Weight Loss and Aesthetics Center, Inc.  
A Professional Medical Corporation

**LIKE US NOW AND RECEIVE A GIFT WHEN YOU VISIT**



Find us on:  
**facebook**®

*Slender Me Medical*  
Weight Loss and Aesthetics Center, Inc.  
A Professional Medical Corporation



Let your friends know you are **HERE**, check in on **FACEBOOK** and receive a **THANK YOU GIFT.**



## THANK YOU

YOUR NAME

REFERRED BY

### HOW IT WORKS

Add your name, hand the referral card to a friend. When your friend comes in for a consultation and shows us the card, both of you will receive a FREE B12 injection or upgrade to a lipo injection or get \$5 off all our services.

**THANK YOU**  
For your referral

*Slender Me Medical*  
Weight Loss and Aesthetics Center, Inc.  
A Professional Medical Corporation

[WWW.SLENDERMEMEDICAL.COM](http://WWW.SLENDERMEMEDICAL.COM)

## THANK YOU

CORONA 951-898-8515  
IRVINE 949-559-5130

*Slender Me Medical*  
Weight Loss and Aesthetics Center, Inc.  
A Professional Medical Corporation

5576 8956 6578 6534

**CUSTOMER REFERRAL CARD**





**CHARGEBACKHELP**  
PROTECTING YOUR PROCESSING



Outcome Analysis



MID Analysis

## ELIMINATE CHARGEBACKS WITH CHARGEBACKHELP PLUS



STOP DISPUTES



REDUCE CHARGEBACKS



RECOVER REVENUE

**GET STARTED NOW!**  
**FREE MANAGEMENT ALERTS INCLUDED**

**INDUSTRY LEADER IN DISPUTE MANAGEMENT**

[chargebackhelp.com](http://chargebackhelp.com)

# Monitoring & Adjusting

Every other week, you will receive a debrief. This update includes information highlighting:

- Fan Increase on Social Media Platforms
- Pay Per Click Campaign Results
- SEO Ranking Reports
- Boosted posts results
- Twitter Analytics
- Facebook Analytics
- Group Posting Efforts
- Fan Increase Efforts
- Response behavior to our posts





# GO THRIVE MARKETING

FLOW | BLOSSOM | PROSPER

## Adjusting

If necessary:

- Adjust Strategies
- Adjust Branding
- Adjust Wording



## Monitoring

- Fan Increase
- Engagement
- Response rate to posts

## Analyzing and Planning

- Target Market Analysis
- Goal Setting
- Strategies
- Branding

## Implementation

- Fan Increase
- Paid Campaigns
- Content
- Postings



# THANK YOU



GO THRIVE MARKETING  
FLOW | BLOSSOM | PROSPER

Thank You for your time to read through our presentation. We are looking forward to hearing from you!



[thrive@thrivemarketing.com](mailto:thrive@thrivemarketing.com)



(760) 427 1625